



ESNA OFFICELINX™

Proxy Server Setup

PROXY SERVER SETUP

This document provides the details required to configure the proxy settings that enable Esna Officelinx to access the Esna License server.

These steps are only required if the voice server cannot access the license server without generating errors.

Contacting Esna™

Esna Technologies Inc.
30 West Beaver Creek Rd., Suite 101
Richmond Hill, ON. CANADA L4B 3K1
Tel: +1 905-707-9700
Fax: +1 905-707-9170
Website: www.esna.com

For hardware and software support, contact:

Tel: +1 905-707-1234
E-mail: techsupp@esna.com

For documentation requests and feedback, contact:

E-mail: documentation@esna.com

Copyright & Trademarks

Esna Technologies Inc.
*30 West Beaver Creek Rd., Suite 101
Richmond Hill, ON. CANADA L4B 3K1*

Copyright © 1992-2016 by Esna Technologies Inc. All rights reserved.

Esna Officelinx Unified Communications Server is made available under the terms of the Esna Technologies Inc. license agreement without express or implied warranties of any sort, including, specifically, any warranties relating to the performance or maintenance of the program.

While every effort has been made to ensure accuracy, Esna Technologies Inc. will not be liable for technical or editorial errors or omissions contained within the documentation. The information contained in this documentation is subject to change without notice.

Esna software and related documentation may be used only in accordance with the terms of the Esna Technologies Inc. license Agreement and copied only to provide adequate backup protection.

Other brands and products are trademarks or registered trademarks of their respective holders and should be noted as such.

ESNA OFFICELINX: PROXY SERVER SETUP

Introduction

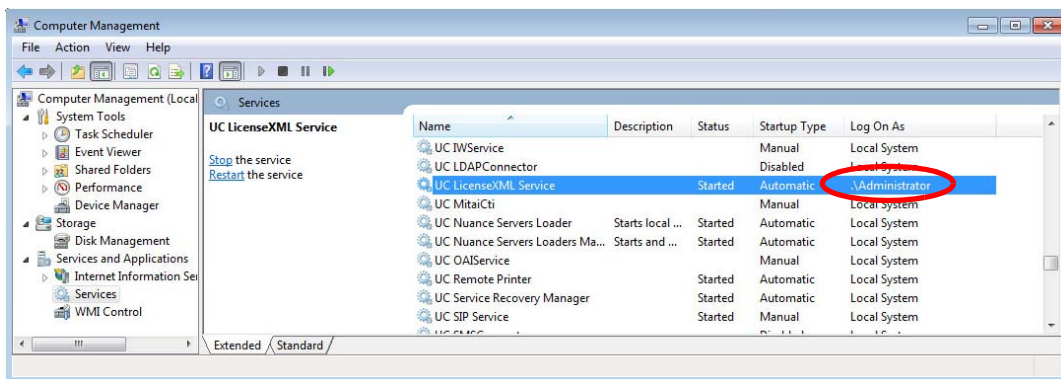
This document provides the details required to configure the proxy settings that enable Esna Officelinx to access the Esna License server.

These steps are only required if the voice server cannot access the license server without generating errors.

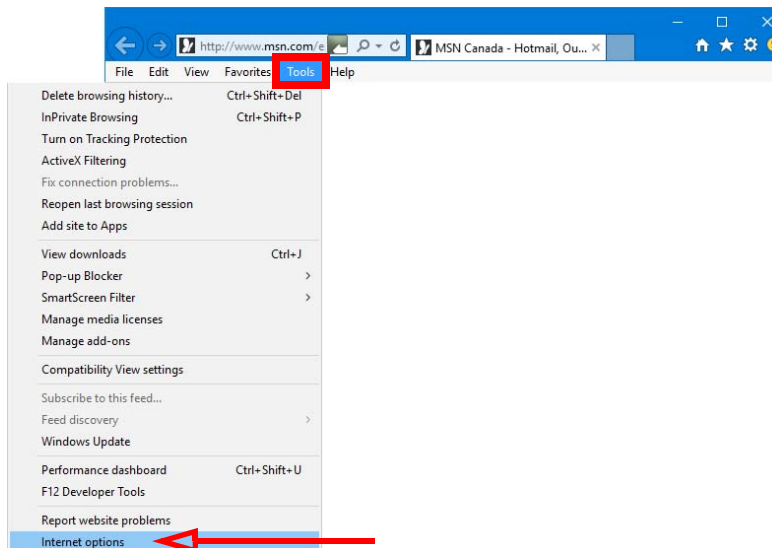
To test the connection to the license server, open a browser and go to <https://loem.esna.com>. If you reach the login screen without receiving any error messages, then the connection is working as it is. Otherwise, follow the instructions that follow to configure the proxy settings for the Officelinx server.

Configuring the Proxy Settings

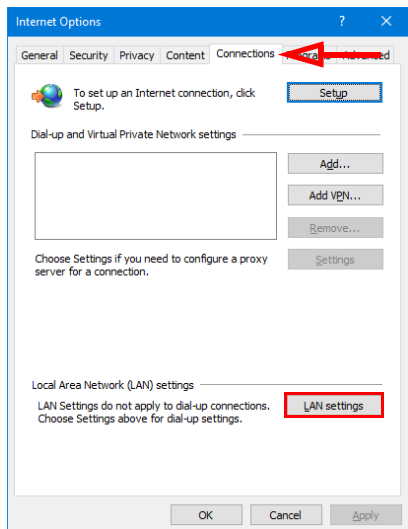
1. Login to the Esna Officelinx server (or the Officelinx Master server in an HA environment) using the same account as the UC LicenseXML Service. Verify the account through the services panel.



2. Once logged in, open Internet Explorer. Click **Tools** and select **Internet Options**.

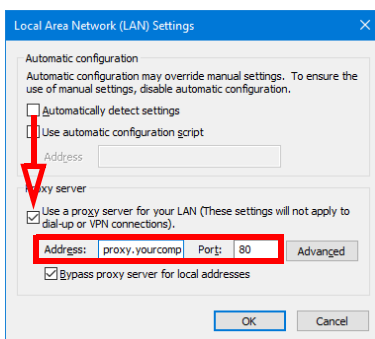


- Go to the **Connections** tab and select **Lan Settings**.



- Under the **Proxy server** settings, enable **Use a proxy server...**. Enter a proxy server address and port number. Consult your network administrator for the details

Click **OK** when finished.



- Test the success of the proxy configuration by returning to the <https://oem.esna.com> web site.

When successful, you will see this screen without receiving any error messages or password pop-up requests.

