



ESNA OFFICELINX™

USB Sentinel on a VMWare Server

Version 10.0 (1) | Jul 2014



Proprietary and Confidential

USB SENTINEL ON A VMWARE SERVER

This document is intended for use by Esna customer service personnel, and it is to be employed at client sites where software licensing is not possible, or is prohibited by company policy. Esna Officelinx is installed on a VMWare Guest computer, and a hardware Sentinel is attached to a USB port on the Host to provide license authentication. The vSphere client is used to attach the Host port to the Guest.

Customers should be made aware that there are additional costs involved when using this solution.

Contacting Esna™

Esna Technologies Inc.

30 West Beaver Creek Rd., Suite 101

Richmond Hill, ON. CANADA L4B 3K1

Tel: +1 905-707-9700

Fax: +1 905-707-9170

Website: www.esna.com

For hardware and software support, contact:

Tel: +1 905-707-1234

E-mail: techsupp@esna.com

For documentation requests and feedback, contact:

E-mail: documentation@esna.com

Copyright & Trademarks

Esna Technologies Inc.

30 West Beaver Creek Rd., Suite 101

Richmond Hill, ON. CANADA L4B 3K1

Copyright © 1992-2014 by Esna Technologies Inc. All rights reserved.

Esna Officelinx Unified Communications Server is made available under the terms of the Esna Technologies Inc. license agreement without express or implied warranties of any sort, including, specifically, any warranties relating to the performance or maintenance of the program.

While every effort has been made to ensure accuracy, Esna Technologies Inc. will not be liable for technical or editorial errors or omissions contained within the documentation. The information contained in this documentation is subject to change without notice.

Esna software and related documentation may be used only in accordance with the terms of the Esna Technologies Inc. license Agreement and copied only to provide adequate backup protection.

Other brands and products are trademarks or registered trademarks of their respective holders and should be noted as such.

USB SENTINEL ON A VMWARE SERVER

Introduction

This document is intended for use by Esna customer service personnel, and it is to be employed at client sites where software licensing is not possible, or is prohibited by company policy. Esna Officelinx is installed on a VMWare Guest computer, and a hardware Sentinel is attached to a USB port on the Host to provide license authentication. The vSphere client is used to associate the Host port with the Guest.



Note: Customers should be made aware that there are additional costs involved with this solution.

At most sites, license verification for Esna Officelinx is provided using the company's internet connection to the Esna licensing server. If a site requires on-premise verification due to security policies or other reasons, a USB hardware Sentinel is provided. This is connected to the voice server.

However, if the voice server is installed onto a VMWare Guest (virtual) computer, there is no physical USB port available to connect the Sentinel.

This procedure outlines the steps to install the Sentinel on the **Host** computer, and to configure the VMWare **Guest** to use that port for license verification.

VMWare Host (Host): This is the server computer that houses the all of the guest machines. The Sentinel is connected to a USB port on this machine.

VMWare Guest (Guest): This computer is a virtual machine that resides on the Host. The Officelinx software (voice server) is installed here.



Caution: The Sentinel must not removed from the USB port or the license authentication will fail.

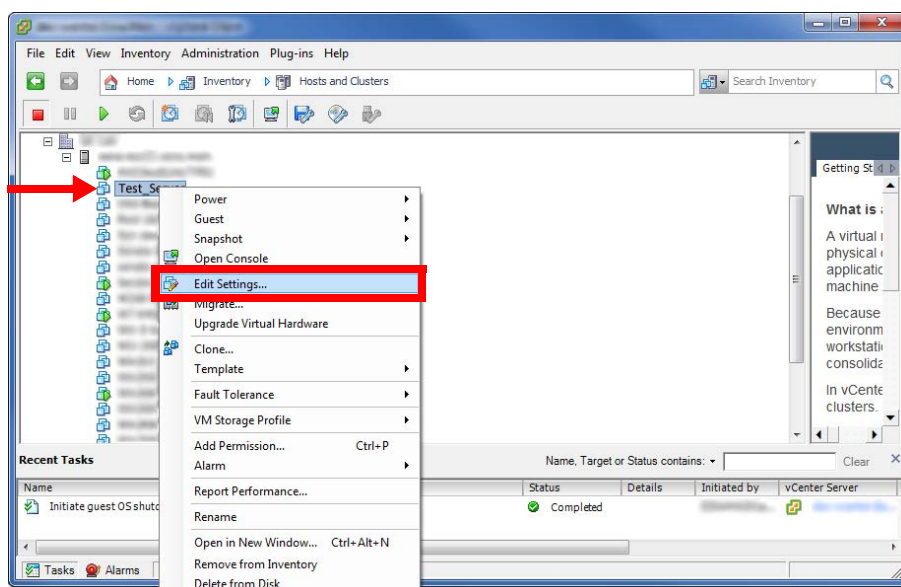
Installation

- All work is to be conducted on a computer with **vSphere Client (v. 5.5+)** installed.
- There must be an available USB Port on the **Host** to accept the Sentinel.
- The **Guest** computer is shut down.

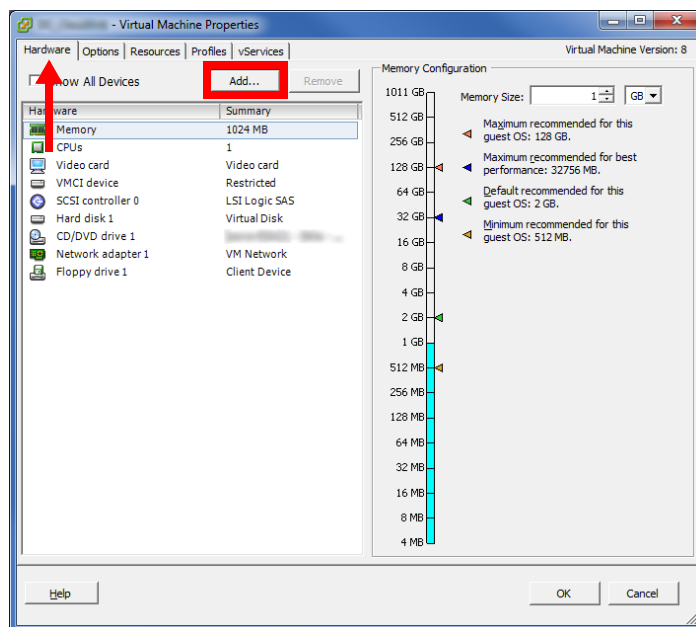
1. Insert the Sentinel into a USB port on the **Host**.



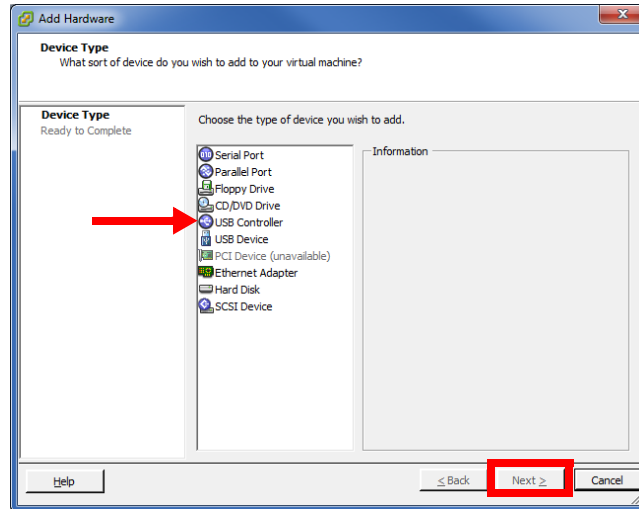
2. Launch the **vSphere Client** from any networked machine.
3. Locate the **Guest** server from the list of installed computers. Right-click the **Guest** and choose **Edit Settings**.



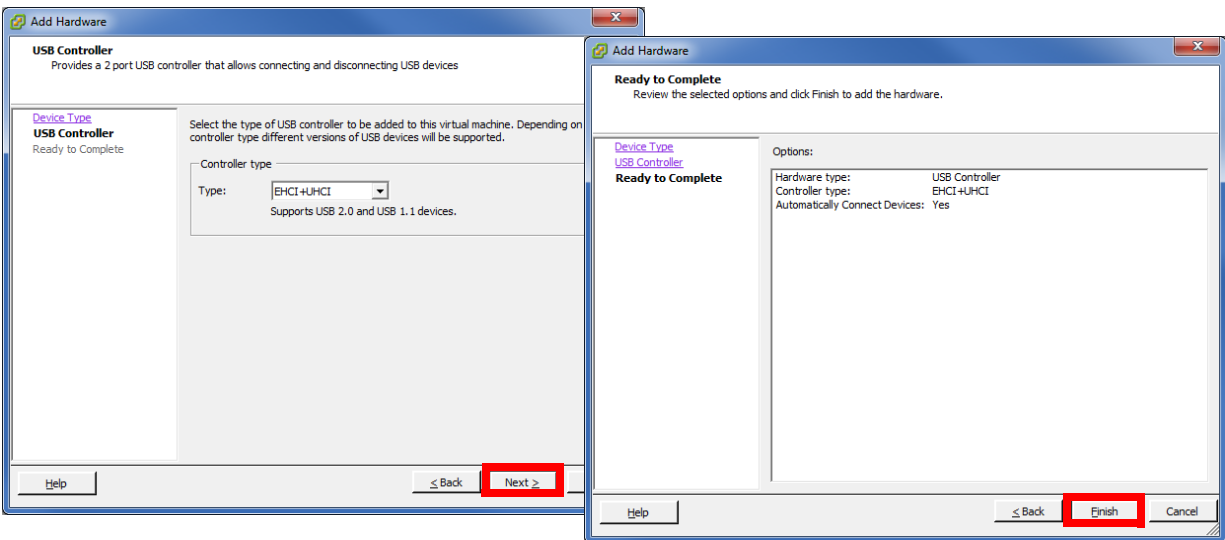
4. On the **Hardware** tab, click **Add**.



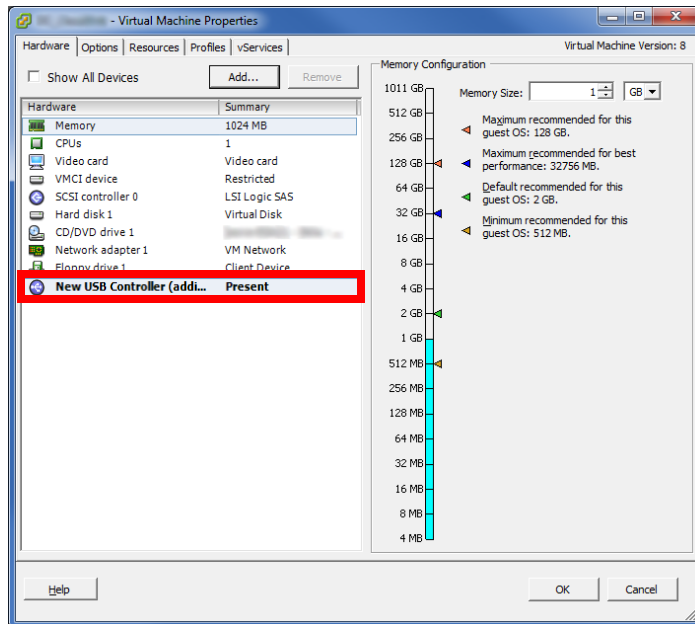
- From the hardware list, choose **USB Controller** and click **Next**.



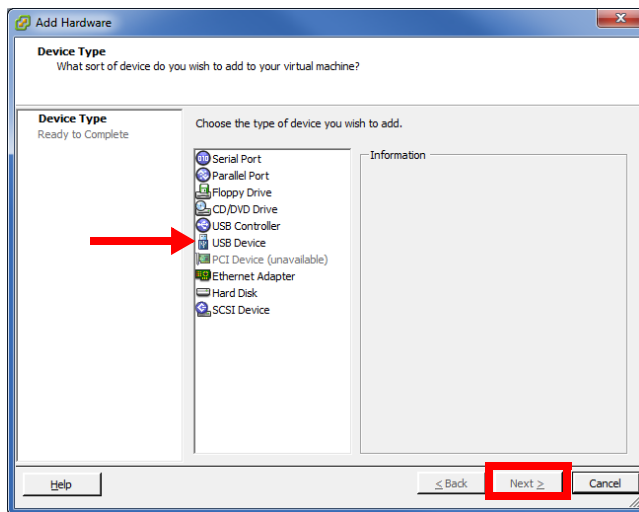
- Continue through the following screens, leaving all settings at their default values.



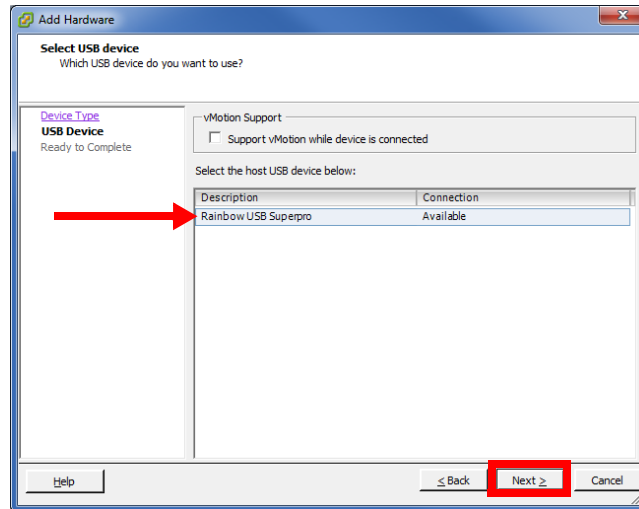
7. The USB Controller has been installed onto the **Guest** computer.



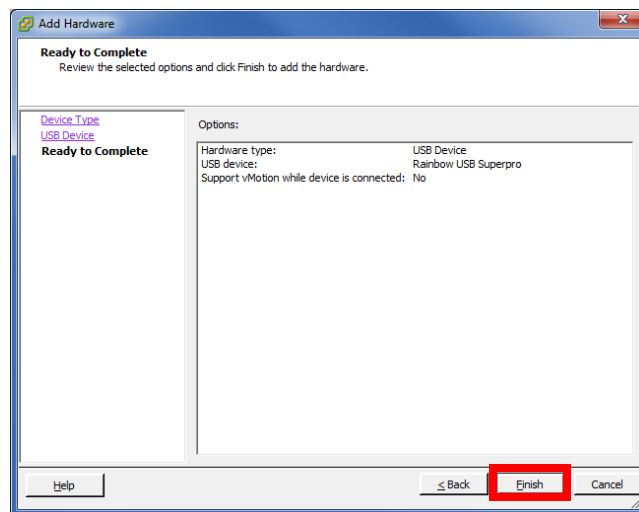
- 8. On the **Hardware** tab, click **Add**.
- 9. From the hardware list, choose **USB Device** and click **Next**.



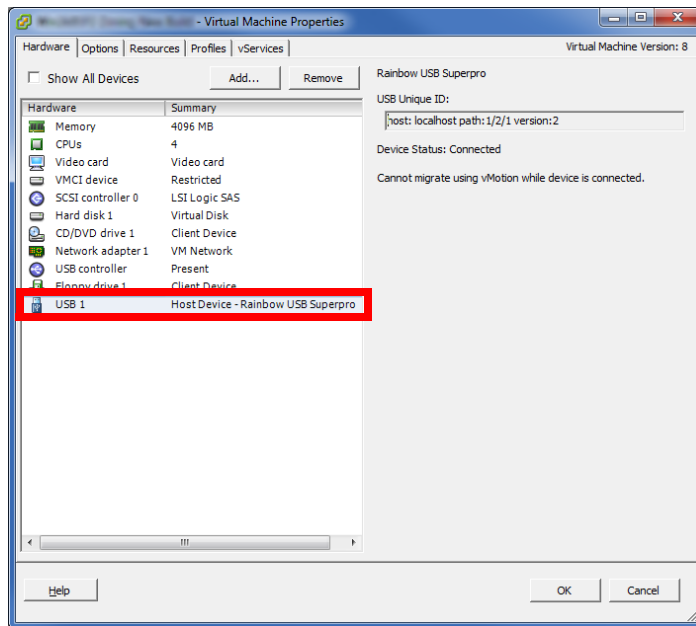
10. Select **Rainbow USB Superpro** from the list of available devices. Click **Next**.



11. Click **Finish**.



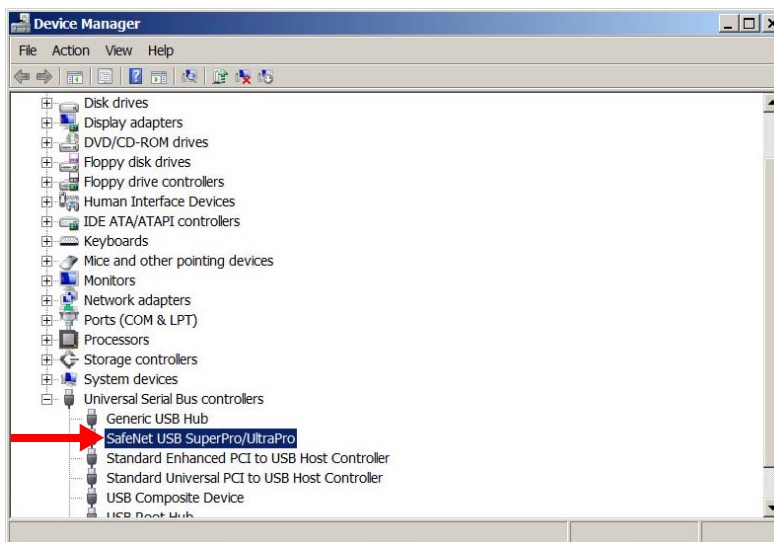
12. The USB Device has been installed onto the **Guest**. Click **OK**.



13. Power up the **Guest** computer (**Right-click Guest > Power > Power On**).

14. To verify the installation was successful, open **Device Manager** on the **Guest**.

Under **Universal Serial Bus controllers**, locate **SafeNet USB SuperPro/UltraPro**.



15. Reboot the **Guest** computer.

16. Proceed with the installation of the Esna Officelinx software, or update the license on the **Guest**.

If the Sentinel was removed

If the Sentinel has been removed from the port, repeat this procedure from the beginning. The existing USB device can be removed from the Guest settings.