



ESNA OFFICELINX™

Configuring SR140 Fax with
an Iwatsu PBX using SIP

Contacting Esna™

Esna Technologies Inc.
30 West Beaver Creek Rd., Suite 101
Richmond Hill, ON. CANADA L4B 3K1

Tel: +1 905-707-9700

Fax: +1 905-707-9170

Website: www.esna.com

For hardware and software support, contact:

Tel: +1 905-707-1234

E-mail: techsupp@esna.com

For documentation requests and feedback, contact:

E-mail: documentation@esna.com

Copyright & Trademarks

Esna Technologies Inc.

*30 West Beaver Creek Rd., Suite 101
Richmond Hill, ON. CANADA L4B 3K1*

Copyright © 1992-2015 by Esna Technologies Inc. All rights reserved.

Esna Officelinx Unified Communications Server is made available under the terms of the Esna Technologies Inc. license agreement without express or implied warranties of any sort, including, specifically, any warranties relating to the performance or maintenance of the program.

While every effort has been made to ensure accuracy, Esna Technologies Inc. will not be liable for technical or editorial errors or omissions contained within the documentation. The information contained in this documentation is subject to change without notice.

Esna software and related documentation may be used only in accordance with the terms of the Esna Technologies Inc. license Agreement and copied only to provide adequate backup protection.

Other brands and products are trademarks or registered trademarks of their respective holders and should be noted as such.

CONFIGURING SR140 FAX WITH AN IWATSU PBX USING SIP

Introduction

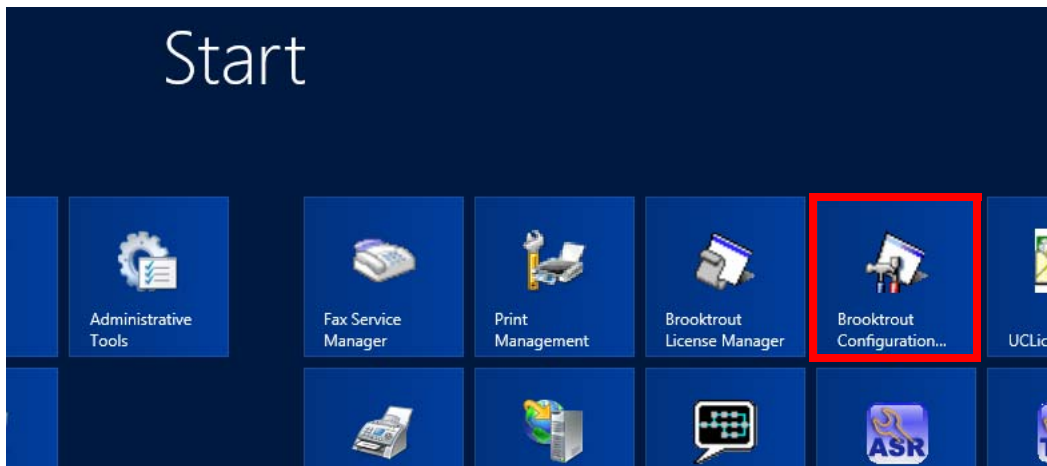
Configuration of the SR140 fax software typically involves the use of SIP trunks. However, Iwatsu PBXs do not support SIP trunks.

All of the other configuration settings outlined in the Feature Description Guide should be made first. Once complete, make the following configuration changes in the Brooktrout Configuration Tool if you want to use the SR140 program with an Iwatsu system.

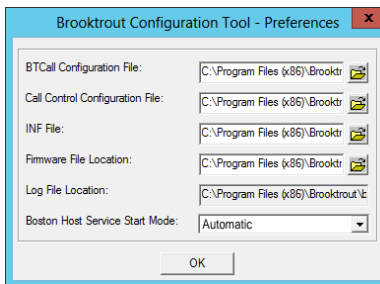
Note: When using SR140 fax software with an Iwatsu PBX, outbound faxing is limited to a single channel.

Procedure

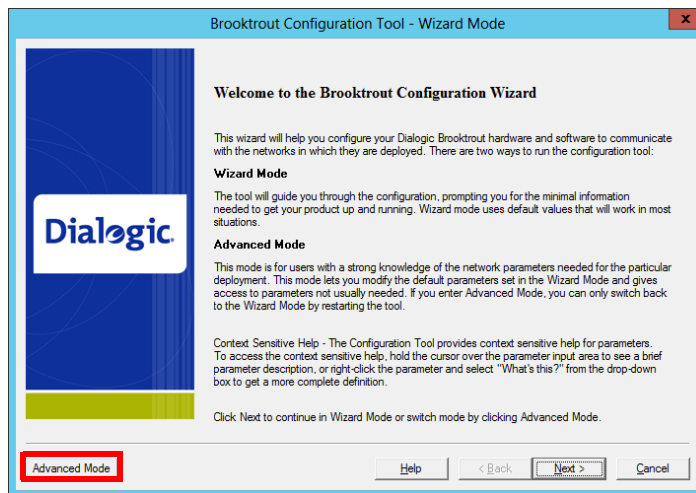
1. Open the **Brooktrout Configuration Manager** program.



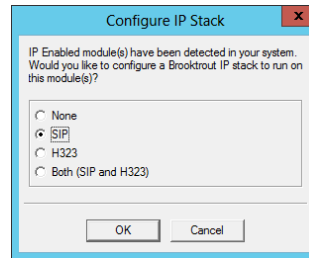
2. At **Configuration Tool - Preferences**, click **OK**.



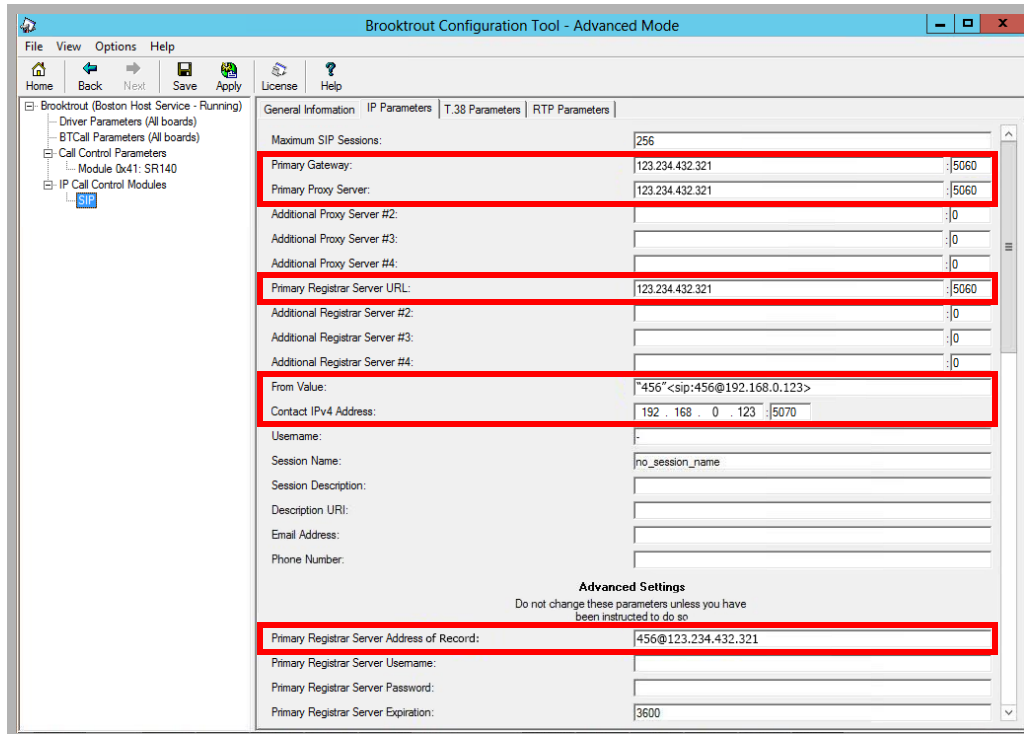
3. When the Configuration Wizard starts, choose **Advanced Mode**.



- Ensure that the option for **SIP** is enabled. Click **OK** to continue.



- In the left-hand window, select **SIP**.
Open the **IP Parameters** tab.
Click the **Advanced** button and set the following parameters.



Primary Gateway: Enter the IP address of the Iwatsu PBX.

Primary Proxy Server: Enter the IP address of the Iwatsu PBX.

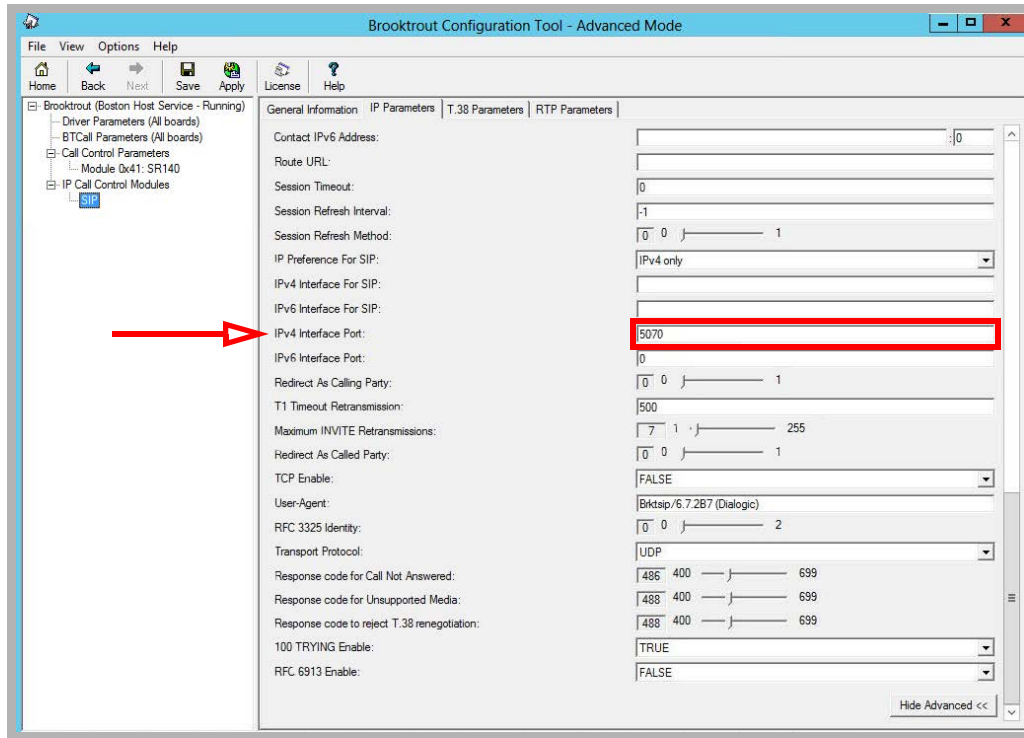
Primary Register Server URL: Enter the IP address of the Iwatsu PBX.

From Value: The format should be "**Description**" <sip:sip ext number@ip address of the officelinx>.

Contact IPv4 Address: Enter the IP address of the Officelinx voice server. Set the port to **5070** so that it does not conflict with port 5060 used by Officelinx for SIP extensions.

Primary Registrar Server Address of Record: Enter the IP address of the Officelinx voice server.

6. Scroll down and make the following change.



IPv4 Interface Port: This is the port of the OfficeInx voice server. Set this to **5070** so that it does not conflict with port 5060 used by OfficeInx for SIP extensions.